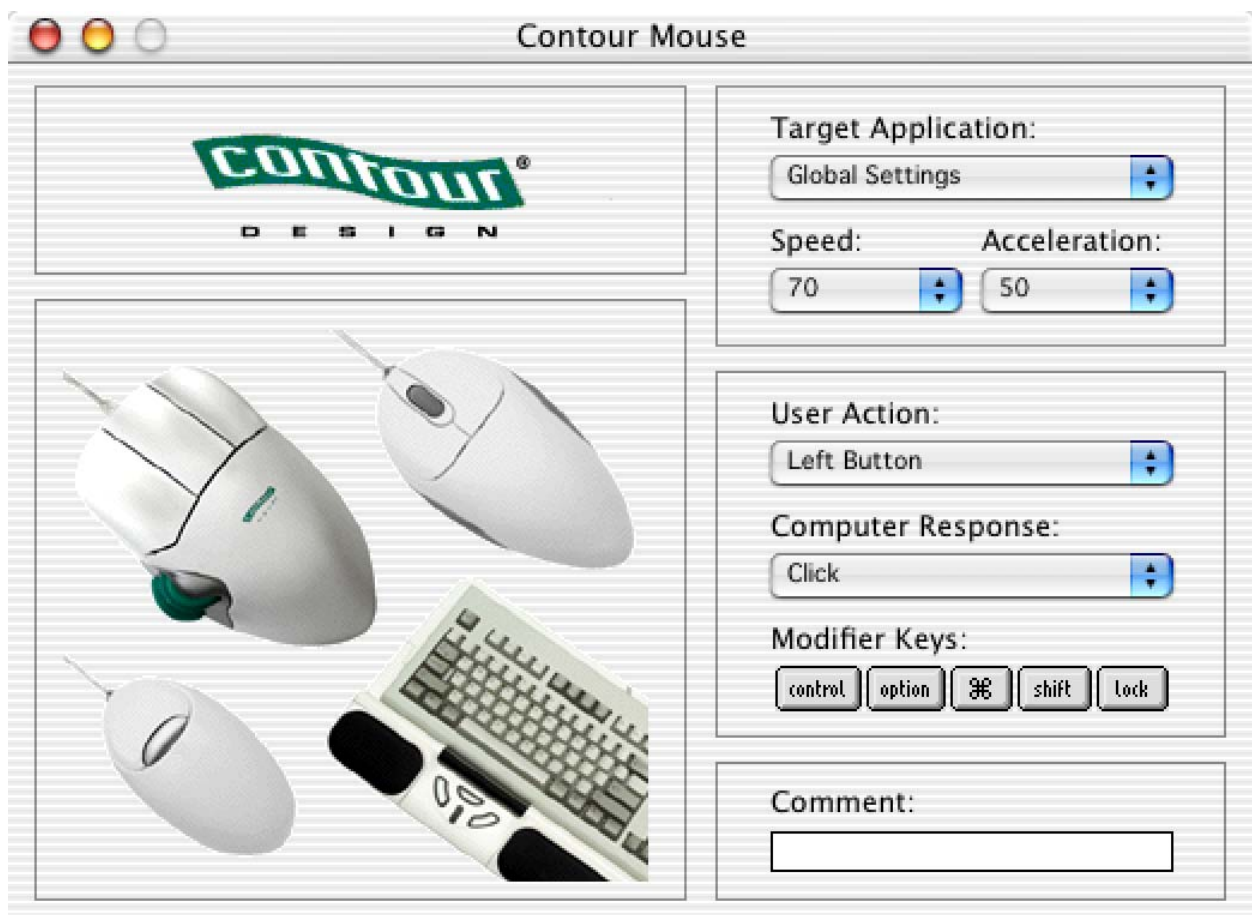


The Contour Mouse Control Panel



User's Guide

Version 1.3

Mac OS X

TABLE OF CONTENTS

Part 1: Introduction.....	1
Overview	1
Installing the Contour Mouse Driver	1
Opening the Control Panel	1
Part 2: Control Panel Components.....	2
Target Application Menu	2
Speed Menu.....	2
Acceleration Menu.....	2
User Action Menu	3
Computer Response Menu	3
Modifier Keys	3
Click Actions	4
Scroll Actions	4
Type Keystroke	4
Open File or Folder.....	5
Comment Field.....	5
Part 3: Using your Mouse	6
Modify Existing Settings.....	6
Program Global Settings	7
Part 4: Programming your Mouse.....	8
Create New Settings.....	8
Create New Settings from Existing Settings.....	8
Create Empty Settings	9
Import Settings.....	9
Export Settings	10
Export Settings Info	10
Remove Settings	10
Rename Settings.....	11
Part 5: Uninstalling the Contour Mouse Driver.....	12
Part 6: Software License Agreement.....	13
Part 7: Contour Customer Care	15
Registering your mouse.....	15
Technical Support	15

Part 1: Introduction

Overview

The Contour Mouse Control Panel allows you to program your Contour mouse (Perfit Optical Mouse, Perfit Mouse, RollerMouse Version 2 set in advanced mode, UniMouse or MiniPRO) in the most efficient way. You may program the buttons once and for all or customize the buttons settings on an application basis.

Note: Due to Mac OS X mouse support implementation, it is strongly recommended you use one mouse at a time on your computer.

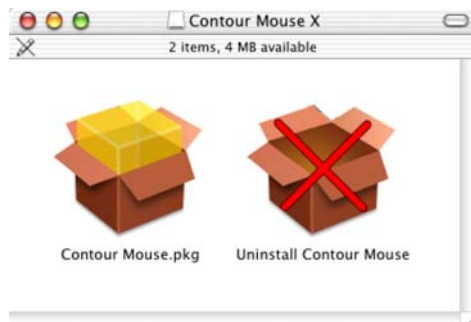
Installing the Contour Mouse Driver

Although the installation does not require it, it is recommended that you close out all other applications that may be running on your system.

Plug your mouse into any available USB port. Since it is a "plug and play" device there is no need to shut down and restart.

If you have any previous Contour Mouse driver installed on your system you will need to uninstall it before installing the latest version (please go to page 12 for guidance on how to uninstall).

1. Locate and **double-click** the Contour Driver dmg file.



2. **Double-click** the Contour Mouse.pkg file.
3. The Authenticate dialog box will prompt you: "Installer requires that you type your passphrase." Type your login password then click **Ok**.
4. A dialog box will prompt you through the rest of the installation process.
5. Select a destination disk to install the Contour Mouse Software and click **Continue**.
6. Once installation is complete you should receive a message stating "The software was successfully installed." Click **Restart** to restart your computer.

Opening the Control Panel

To gain access to the Control Panel,

1. place the focus on the **Finder**
2. press Shift+Apple+A (or alternatively go to the menu **Go**, then click on the submenu **Applications**).
3. double-click on the Contour Mouse icon; it will open the Control Panel.

Part 2: Control Panel Components

Target Application Menu

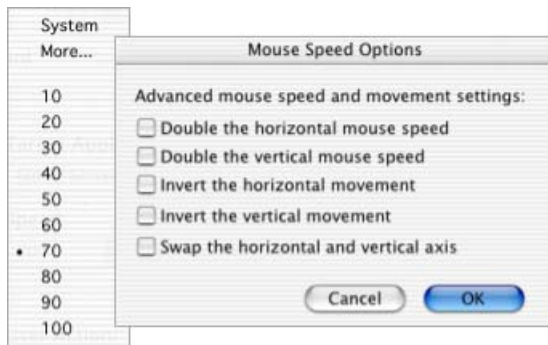


You may access to this menu by clicking on the corresponding right side icon.

This menu contains a Global Settings selection that is a setting that works in with most non-specific applications. Program Global Settings for how you want the device to work overall, and not for application specific purposes. For information on how to program the Global Settings please refer to Part 3 of this guide.

This menu also allows you to create, import, export, remove and rename settings. Further it will contain settings lists for application settings and/or modes that you may create.

Speed Menu



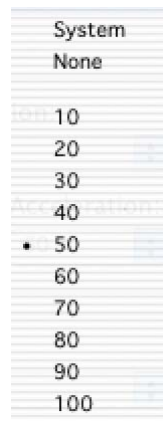
This menu allows you to set your mouse speed.

You may choose the System speed or set the speed to a value between 10 (very slow) and 100 (very fast). You may also select one or more of the advanced speed options:

- Double the horizontal mouse speed,
- Double the vertical mouse speed,
- Invert the horizontal movement,
- Invert the vertical movement,
- Swap the horizontal and vertical axis.

Note: please do **not** enable these three last options just to give them a try: restoring your initial settings may become very painful.

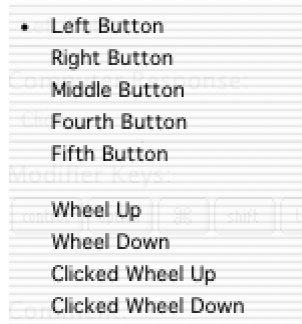
Acceleration Menu



This menu allows you to set your mouse acceleration.

You may choose the System speed or set the speed to a value between 0 (None) and 100 (very fast).

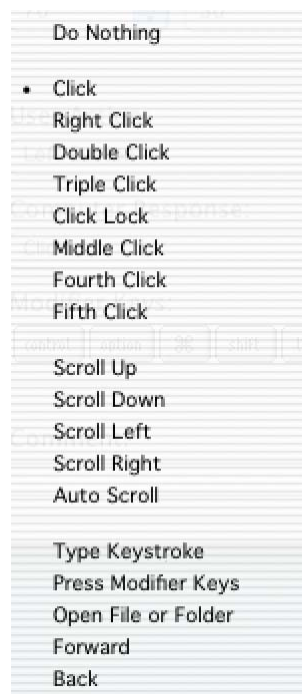
User Action Menu



This menu allows you to choose which button(s) or wheel position you wish to program.

As the Control Panel is the same for all Contour mice, this menu is independent from the mouse that is plugged in: some of these actions might be unavailable on your device and no warning message will be displayed. You may always configure the unavailable actions but they will have no effect without the appropriate device.

Computer Response Menu



The Computer Response Menu allows you to pick a function that you want a button or a wheel position to perform:

- **Do Nothing** does what the name implies – selection of this option means that the button or wheel position will do nothing.
- **Click actions** allows you to select a click option, which can also be combined with a Modifier Key.
- **Scroll actions** allows you to select a scrolling option.
- **Type Keystroke** on the menu allows you to type a keyboard shortcut in the Keystroke field.
- **Press Modifier Keys** allows you to assign a Modifier Key to a button or wheel position.
- **Open File or Folder** allows you to select a file or a folder you may want to open with a single click.
- **Forward** and **Back** allows you to browse through internet pages with any internet browser.

Modifier Keys

This option is available if you choose Press Modifier or any Click actions in the Computer Response Menu.

A Modifier Key is one of the following keys:

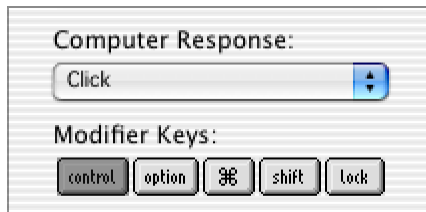


- Control
- Option
- Command
- Shift
- Lock

Select the desired Modifier Key or Keys by clicking on the corresponding icon.

Click Actions

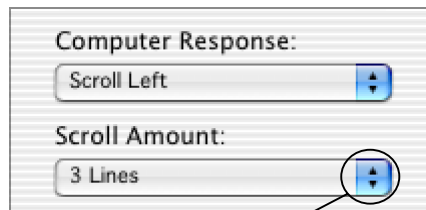
You can select one of the following clicks and combine it with a Modifier Key:



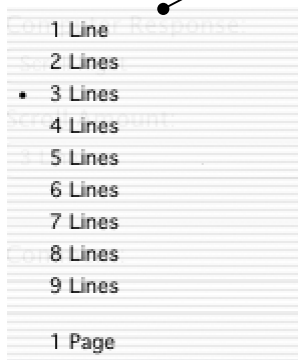
- Click,
- Right Click,
- Double Click,
- Triple Click,
- Click Lock,
- Middle Click,
- Fourth Click,
- Fifth Click.

Scroll Actions

You may select one of the following scroll actions:



- Scroll Up,
- Scroll Down,
- Scroll Left,
- Scroll Right,
- Auto Scroll.

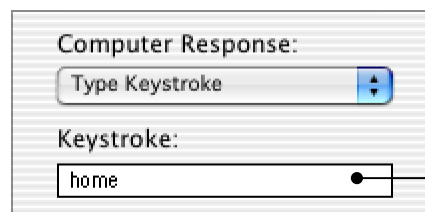


Through the Scroll Amount Menu you will be allowed to choose how many lines the scrolling feature will move at a time. You may choose from 1 to 9 lines at a time or scroll by an entire page.

This option is **not** available if you select Auto Scroll.

Type Keystroke

Click on the Keystroke Field and type the keyboard shortcuts that you want a button or wheel position to perform.



Keystroke Field

Open File or Folder

The Open File or Folder menu allows you to choose a file or folder that you wish to open. This is a most useful feature for launching applications just with a mouse click.



Comment Field

The Comment Field allows you to place a comment about a command or define a button's function. Click the field and type a description.

This field works for any function on the Control Panel.

Part 3: Using your Mouse

Now that you have become familiar with the Control Panel components, let's move on to using and modifying your mouse settings.

Before going through the contents of this section, **open the Control Panel.**

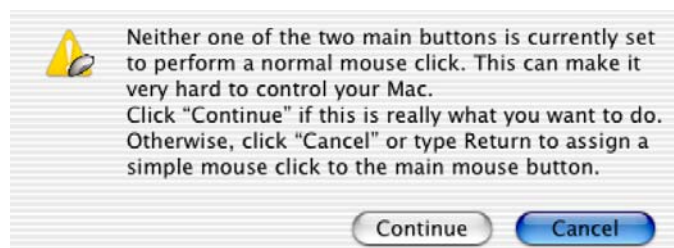
Note: Changes you perform on settings will **take effect immediately.**

Modify Existing Settings

In order to modify existing settings,

1. Click on the Target Application Menu and select the application setting you would like to modify. (After so doing, you should now see this setting name in the Target Application Menu).
2. Click on the User Action Menu and select the button or wheel position you want to change. Once chosen you should see it highlighted in the User Action Menu.
3. Click on the Computer Response Menu and select a function you wish the button or wheel position to perform. You can choose between:
 - Do Nothing
 - Click actions
 - Scroll actions
 - Type Keystroke
 - Press Modifier Keys
 - Open File or Folder
 - Forward or Back.
4. Add the description of the requested action in the Comment Field.
5. You may now iterate steps 2 and 4 as many times as you have buttons or wheel positions you wish to change. If you have completed the desired changes, you are done.
6. Close the Control Panel and use the setting(s) within the selected application of your choice.

Note: if neither the left nor the right button is set to click, a warning box will prompt you:



Program Global Settings

Global Setting is a setting that works in any non-specific application. Program Global settings for how you want the device to work overall, and not for application specific purposes.

If you have an application setting for a particular application, global settings will not work since it is meant for general purposes only.

If you want to utilize the global settings feature:

1. Select **Global Settings** in the Target Application Menu.
2. With this setting selected, setup the device the same way you would when you modify a setting (please refer to the previous paragraph for guidance on how to accomplish this).

Part 4: Programming your Mouse

This section will analyze in detail the operations you can perform on settings from the Target Application Menu.

Before going through the contents of this section, **open the Control Panel**

Note: Changes you perform on settings will **take effect immediately**.

Create New Settings

Create New Settings from Existing Settings

This function allows you to create new settings by copying them from existing settings.

1. Click on the Target Application Menu and select the application setting you would like to modify. (This setting name should now appear in the Target Application Menu).
2. Select **Create New Settings** from the Target Application Functions Menu.
3. A dialog box will prompt you to create a new set.

Select *either* the second item

Copy from Global Settings

or the third

Copy from: name of the setting selected in step 1.

Click **Ok**.



4. A dialog box will prompt you to locate the target application. Select the application you want and click **Choose** in the right hand of the dialog box.
5. A dialog box will prompt you to enter a name for your new setting. Click **Ok**.
6. The name of the application will now appear in the Target Application Menu. With this application selected, modify your setting as explained in paragraph 'Modify Existing Settings'.
7. Close the Control Panel and use the setting(s) within the selected application of your choice.

Create Empty Settings

This function allows you to create new settings for any existing application on your computer.

1. Click on the Target Application Menu and choose **Create New Settings**.
2. A dialog box will prompt you to create a new setting; choose the first item **Create Empty Settings**. Click **Ok**.



3. A dialog box will prompt you to locate the Target Application. Select the application you want and click **Choose** in the right hand of the dialog box.
4. A dialog box will prompt you to enter a name for your new setting. Click **Ok**.
5. The name of the application will now appear in the Target Application Menu. With this application selected, modify your setting as explained in paragraph 'Modify Existing Settings'.
6. Close the Control Panel and use the setting(s) within the selected application of your choice.

Import Settings

There are two (2) methods for importing an application setting. Please see below for the better method to suit your needs.

Note: This import capability exists ONLY when an established setting is available.

Method 1.

1. Click on the Target Application Menu and select **Import Settings**.
2. **Locate** the setting you wish to import.
3. Once you have chosen the setting you want to import click **Choose**. This setting will now appear in the Target Application Menu.

Method 2.

1. **Locate** the setting you wish to import.
2. Once you have chosen the setting you want to import, simply **double-click** it. This setting will now appear in the Target Application Menu.

Export Settings

If you want to export an application set.

1. Click on the Target Application Menu and select the application setting you would like to export. (After so doing, you should now see this setting name highlighted in the Target Application Menu).
2. Click on the Target Application Menu again. Select **Export Settings** from the pull-down menu.
3. A dialog box will prompt you to type a name for the file that will be created and to choose its destination folder. Once you have done so, click on **Save** in the lower right hand of the dialog box.

Export Settings Info

This function allows you to create a **.txt file** which contains the list of the settings for all the application which appears in the Target Application Menu.

1. Click on the Target Application Menu. Select **Export Settings** from the pull-down menu.
2. A dialog box will prompt you to type a name for the file that will be created and to choose its destination folder. Once you have done so, click on **Save** in the lower right hand of the dialog box.
3. Locate and double-click to open the newly created file.

Remove Settings

Note: the operation **cannot be undone**.

If you want to remove (delete) an application set from the application set folder.

1. Click on the Target Application Menu and select the application setting you would like to remove. (After so doing, you should now see this setting name in the Target Application Menu).
2. Click on the Target Application Menu and select **Remove Settings** from the pull-down menu.
3. A dialog box will prompt you: "Do you want to remove your custom application settings for [name of the selected application]?". Click **Remove**. The application setting is now removed from the Target Application Menu.

Rename Settings

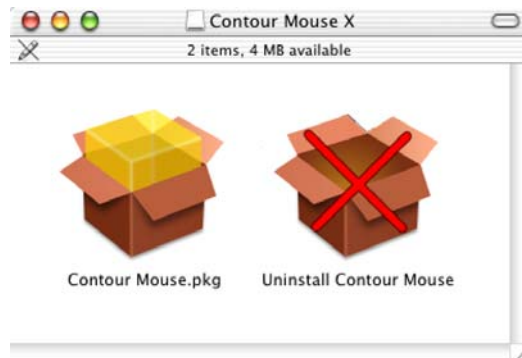
If you want to rename an application setting:

1. Click on the Target Application Menu and select the application setting you would like to rename. (After so doing, you should now see this setting name in the Target Application Menu).
2. Click on the Target Application Functions Menu. Select **Rename Settings** from the pull-down menu.
3. Enter a name of your choice, up to 31 characters. It is recommended that you use a different name than one used for any other setting.
4. Press **OK** on your keyboard to save the new name.

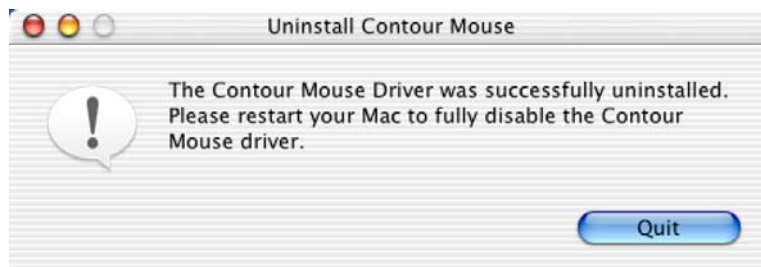
Part 5: Uninstalling the Contour Mouse Driver

Note: This process cannot be undone.

1. Locate and **double-click** the Contour Driver dmg file.



2. **Double-click** the Uninstaller.
3. A dialog box will prompt you: "Do you really want to uninstall the Contour Mouse driver from your system?" Click **Uninstall**.
4. The Authenticate dialog box will prompt you: "Uninstall Contour Mouse requires that you type your passphrase." Type your login password then click **Ok**.
5. A dialog box will now prompt you stating "The Contour Mouse Driver was successfully uninstalled. Please restart your Mac to fully disable the Contour Mouse driver." Click **Quit**.



6. Restart your computer.

Part 6: Software License Agreement

By installing the downloaded software you agree to the following license agreement:

Grant of License - Contour Design, Inc. ("Contour") grants you this non-exclusive license to use the accompanying downloaded software subject to the restrictions set forth below.

Definitions - The accompanying software (the "downloaded software") is/was offered via Internet pages for download as updates, utilities and amendments to existing Contour hardware products (the "original hardware").

Restrictions on Use - You may install and use one copy of the downloaded software program(s) on a single computer. You may not lend, rent, lease, or transfer this downloaded software to another party at any time. Installation on a computer that may be concurrently accessed by more than one user requires a separate license for each active user connected to a computer on which the software is installed. You may not modify, reverse engineer, de-compile, or disassemble the downloaded software.

Copyright - The downloaded software is owned by Contour or its suppliers and is protected by copyright laws and international treaties.

Term - This license is effective until terminated. You may terminate it at any time by destroying the downloaded software together with all copies in any form. It will also terminate if you fail to comply with any term or condition of this Agreement. You agree upon such termination to destroy the downloaded software together with all copies in any form.

Limited Warranty - Contour assumes responsibility and warranty only for the shape of the software when transferred by Contour to the Internet. All faults occurring as a consequential result of Internet dissemination and the process of downloading are at customer's own risk. This downloaded software is provided "as is" and without any warranty and liability whatsoever. Contour does not warrant that the functions contained in the Software will meet your requirements or that the operation of the Software will be uninterrupted or error free. You assume responsibility for operation of the Software to achieve your intended results, and for the installation, use, and results obtained from the Software. Subject to any applicable legislation that prohibits the following exclusions, CONTOUR MAKES NO OTHER WARRANTIES OF ANY KIND, EITHER EXPRESS OR IMPLIED, INCLUDING, WITHOUT LIMITATION, ANY IMPLIED WARRANTIES OF FITNESS FOR A PARTICULAR PURPOSE, MERCHANTABILITY, MERCHANTABLE QUALITY OR NONINFRINGEMENT OF THIRD PARTY RIGHTS. Some states or jurisdictions do not allow the exclusion of implied warranties so the above limitations may not apply to you.

Limitation of Remedies - Subject to any applicable legislation that prohibits the following limitations, Contour's entire liability and your exclusive remedy shall be, at

Contour's option, the repair or replacement of the downloaded software not meeting Contour's "Limited Warranty". This remedy is not available if failure of the Software is the result of misuse, abuse, or a failure to follow the operating instructions in the accompanying written materials. IN NO EVENT WILL CONTOUR OR ITS SUPPLIERS OR DEALERS BE LIABLE TO YOU FOR ANY INCIDENTAL OR CONSEQUENTIAL DAMAGES, INCLUDING ANY LOST PROFITS, LOST SAVINGS, OR OTHER DAMAGES ARISING OUT OF THE USE OR INABILITY TO USE THE SOFTWARE, EVEN IF ADVISED OF THE POSSIBILITY OF SUCH DAMAGES. Some states or jurisdictions do not allow the exclusion of implied warranties so the above limitations may not apply to you.

General - If the Software was downloaded in the United States, this Agreement is governed by the laws of the State of New Hampshire. If downloaded outside the United States, this Agreement is governed by the laws of the country in which it was downloaded.

U.S. Government Restricted Rights - The Software and documentation are provided with RESTRICTED RIGHTS. Use, duplication, or disclosure by the Government is subject to restrictions as set forth in subdivision (b)(3)(ii) of The Rights in Technical Data and Computer Software clause 252.227-7013. Contractor / manufacturer is Contour Design, Inc, 10 Industrial Drive, Windham, New Hampshire, 03087

European Community Provisions - If this Software is used within a country of the European Community, nothing in this Agreement shall be construed as restricting any rights available under the European Community Software Directive, O.J. Eur. Comm. (No. L. 122) 42 (1991).

Part 7: Contour Customer Care

Registering your mouse

Log on to our website <http://www.contourdesign.com/> to register¹ your mouse.

Technical Support

Before contacting us, please check the support page of your mouse.

You may contact us by

- sending an **email** to support@contourdesign.com or,
- calling Contour Design from 9AM through 6PM Monday through Friday EST/EDT: 1-800-462-6678 Voicemail Option 2 or 603-893-4556 Voicemail Option 2 International.

¹ *Privacy Statement:* Contour Design, Inc. strict policy is **NOT** to sell, rent, or otherwise make available to anyone outside of Contour Design, any information regarding our Customers. We may use the data you provide, however, to announce future Contour Products, including information on subsequent releases of the driver and/or upgrades.